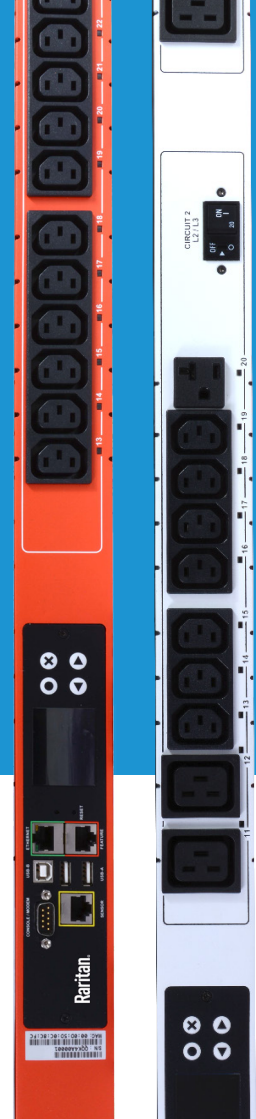


# 5 GREAT REASONS to Use Colored Rack PDUs



# WHY COLOR RACK PDUS?

## 5 Great Reasons to Use Colored Rack PDUs

### REASON 1.

Easily Identify Redundant Power Feeds to IT Equipment

### REASON 2.

Make it Easy for Technicians Working in Your IT Rack

### REASON 3.

Clearly Identify Your Data Center Power Chain

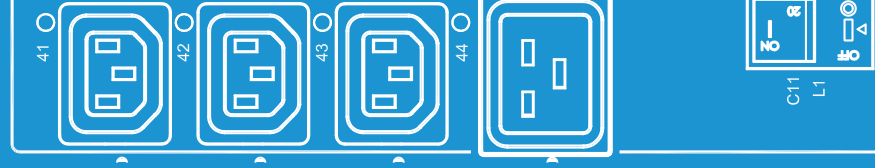
### REASON 4.

Identify Different Voltages in Your Data Center

### REASON 5.

Reduce Lighting Requirements in Your Data Center





# WHAT THE EXPERTS SAY...



More than 90% of data center operators responding to a recent survey reported that their data center had at least one unplanned outage in the past two years. Almost half reported only one to two power interruptions, but virtually the same percentage reported three to 10 outages. (Source: Ponemon Institute.)



The overwhelming majority of outages were attributed to human error or some type of equipment failure that may have been prevented had adequate training, monitoring or maintenance procedures been in place.



Uptime Institute data suggest: although outages are exceedingly rare in member facilities, virtually all can be traced back to human error. (Source: Uptime Institute).



The difference between the frequency of outages for survey respondents reinforces the importance of a comprehensive management and operations program to ensure continuous data center availability.



**This is where Colored Rack PDUs can help.**

## REASON 1.

# Easily Identify Redundant Power Feeds to IT Equipment



Use color to identify the A and B power feeds at the rack.

"A" power feed is red

"B" power feed is blue



Cords stay in, servers stay up.

With SecureLock® outlets and power cords (IEC C13, C14, C19 and C20) you'll know your power cords can't be accidentally unplugged, vibrate loose or get bumped out of your iPDUs.



## REASON 2.

# Make it Easy for Technicians Working in Your IT Rack



Ever try to explain which rack PDU supplies power to your server?

*"It's the left hand PDU when you are looking at the cabinet from the rear."*

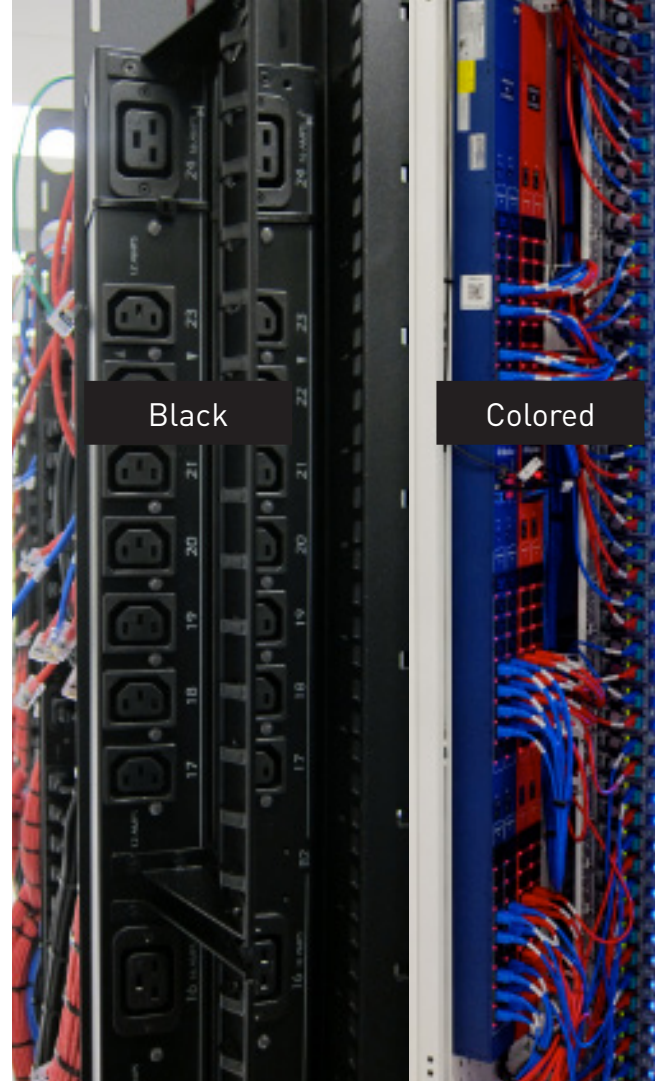


Why not make it easy?

*"It's the red PDU in the rack."*



Simplify communications and make it easier to troubleshoot problems in your power chain.



### REASON 3.

## Clearly Identify Your Data Center Facility Power Chain



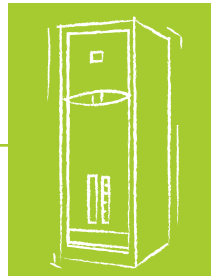
Use colored PDUs to match the same color as the entire power chain that supplies power to the rack.



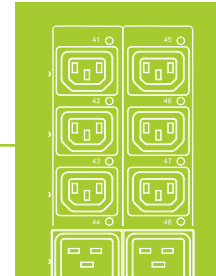
Easily identify which power chain supplies power to every server in you IT rack.



UPS (Green)



RPP (Green)



Rack PDU (Green)

## REASON 4.

# Identify Different Voltages in Your Data Center



Use color to identify different power distribution voltages within your facility.

Magenta  
230V  
Single Phase

Yellow  
400V  
Three Phase WYE



### Residual Current Monitoring (Optional)



Meet legal requirements and reduce the risk of electric shock by measuring current flowing in the ground wire.

## REASON 5.

# Reduce Lighting Requirements in Your Data Center



More and more data centers are going to white cabinets rather than black ones.



Use white PDUs and white cabinets and leverage the reflective properties of white vs. black.



LED lighting is popular because it consumes less power but may not be as bright as traditional lighting.





# WHY RARITAN FOR COLOR RACK PDUS?



Raritan offers professional powder coated full color PDUs, not color stickers, to make it easy to see – at any angle.



Raritan offers 10 colors in addition to black – red, blue, green, magenta, orange, yellow, white, brown, gray and light blue.



Raritan offers SecureLock colored locking plug cords to prevent power cords from accidentally disconnecting from rack PDU's.



As a leader in the Intelligent PDU market, Raritan was first to market with this innovation. Listening to customers made it possible.



# THE BENEFITS AT A GLANCE



**Billing-grade power metering.** Measure current, voltage, power, power factor, and energy usage well within 1% billing-grade accuracy.



**Remote power control.** Prevent unauthorized access, reboot hung servers, ensure proper provisioning, and avoid tripped circuit breakers.



**Integrated power management platform.** Raritan's hybrid transfer switches, residual current monitoring module, environmental sensors, and branch circuit monitoring solution, all help towards more efficient data center operations and cost reductions.



**Five features, one port.** The PX series comes equipped with USB ports to support Wi-Fi networking, iPDU to PDU cascading, webcams, quick setup, and at-the-rack display.



**Secure and encrypted.** Directory services support advanced authorization options, including: LDAP/S, RADIUS and Active Directory®. 256-bit AES encryption and strong passwords, making it the most secure PDU on the market.



**Hundreds of models to choose from.** Whether you have a small, medium, or large data center; densely packed 400V three-phase racks; high power blade servers; or a lights-out colo deployment -- there's a PX just for you.



## SELECT THE PDU THAT MEETS YOUR REQUIREMENTS

Visit [www.findmyPDU.com](http://www.findmyPDU.com) and select the intelligent PDU you are looking for. Choose from close to 1,000 models in different configurations, dimensions, and functionality; all available from stock or with short lead times and built to the highest of standards.

# WHO HAS CHOSEN COLORED RACK iPDUs?



WHICH COLOR WOULD YOU CHOOSE?





## AMERICAN HEADQUARTERS

400 Cottontail Lane  
Somerset, NJ 08873

Phone: (732) 764-8886  
(800) 724-8090

Email: [sales@raritan.com](mailto:sales@raritan.com)

